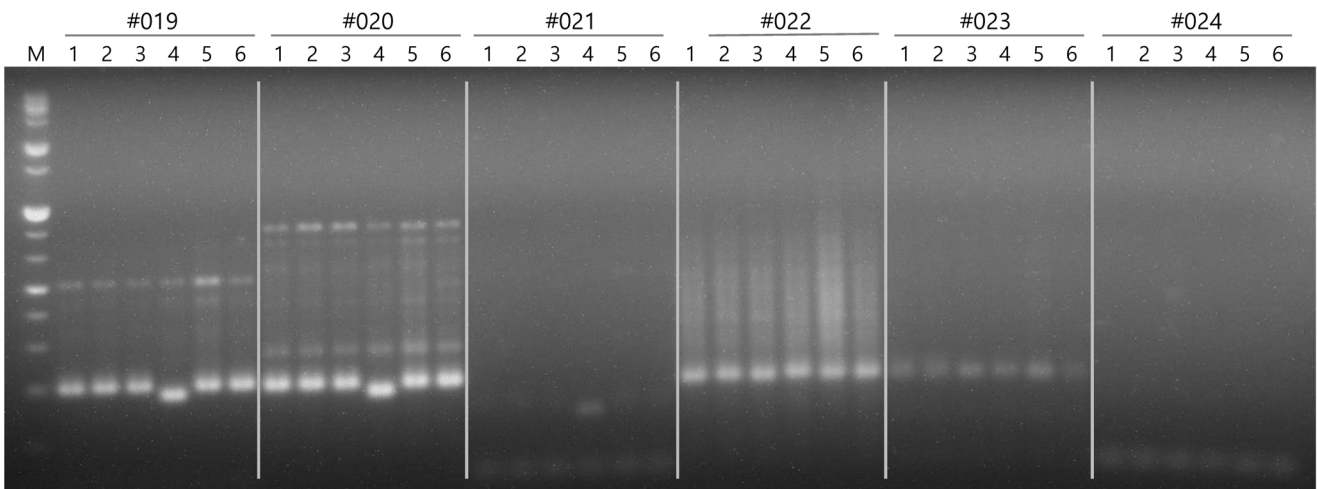
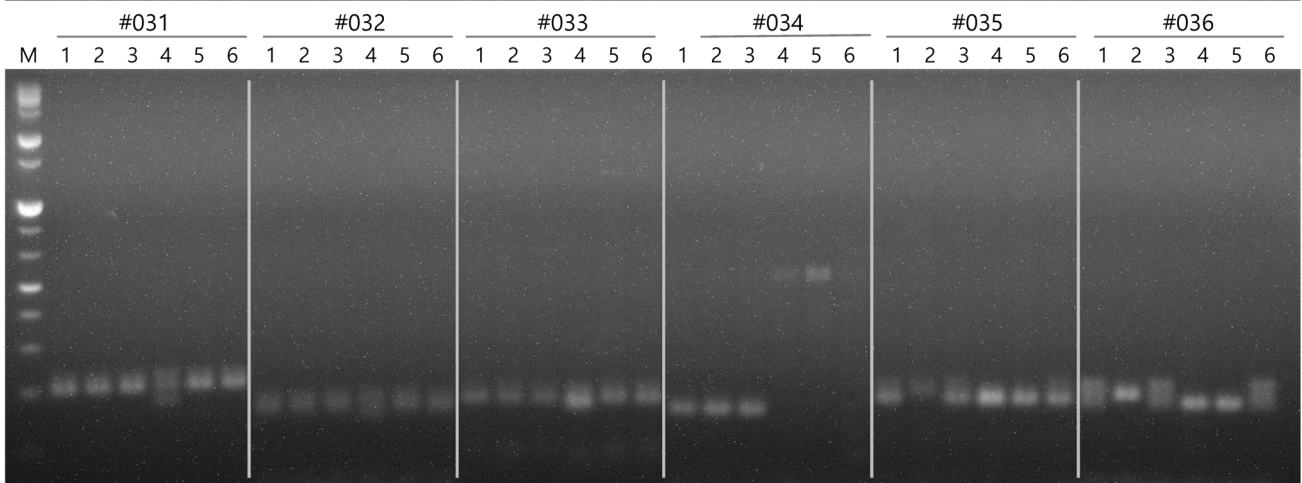
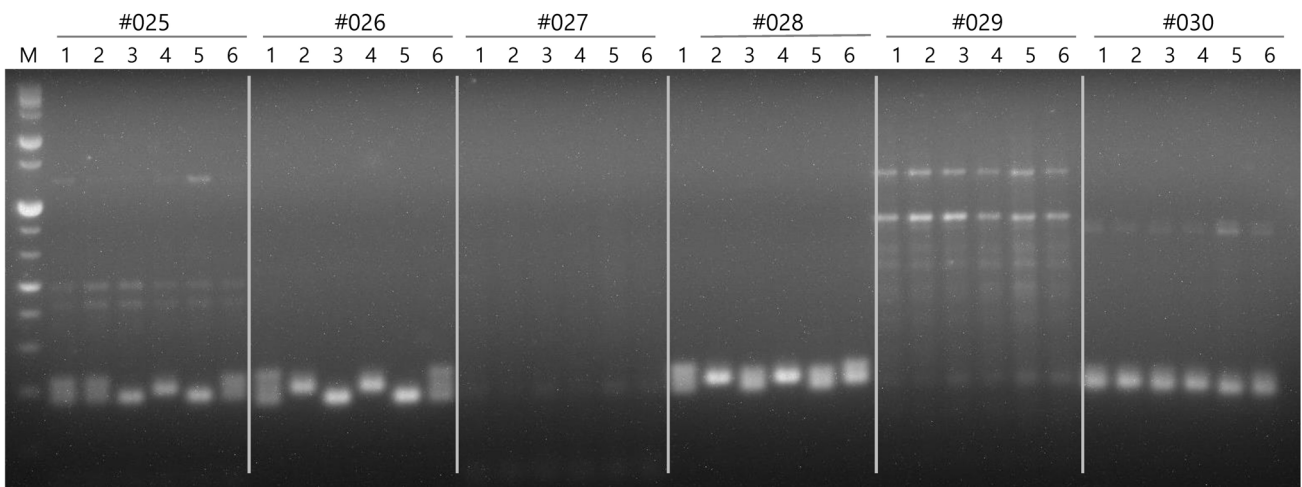


Supplementary Fig. 1. PCR screening of 6 peach cultivars for FDP using 260 SSR primers.

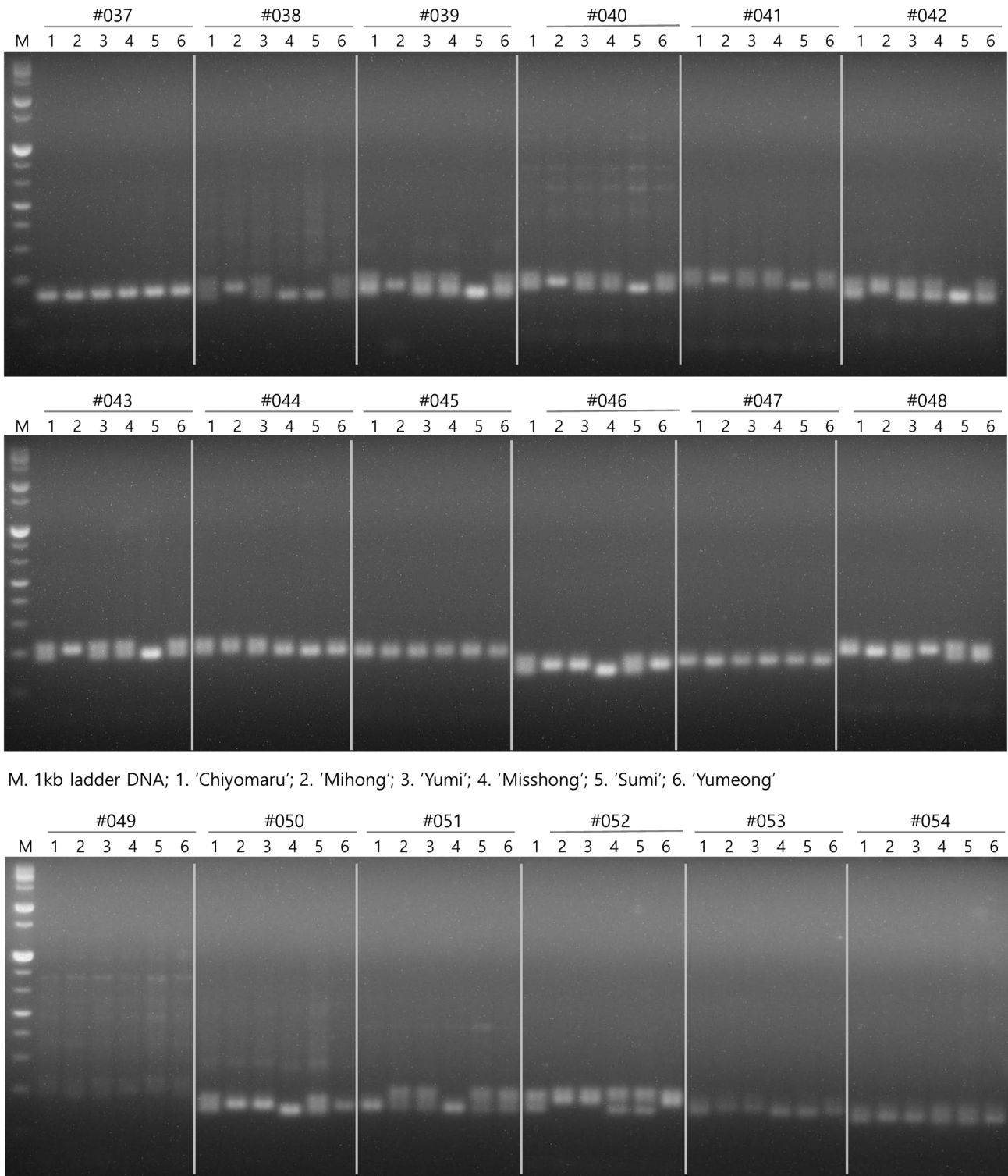


M. 1kb ladder DNA; 1. 'Chiyomaru'; 2. 'Mihong'; 3. 'Yumi'; 4. 'Misshong'; 5. 'Sumi'; 6. 'Yumeong'



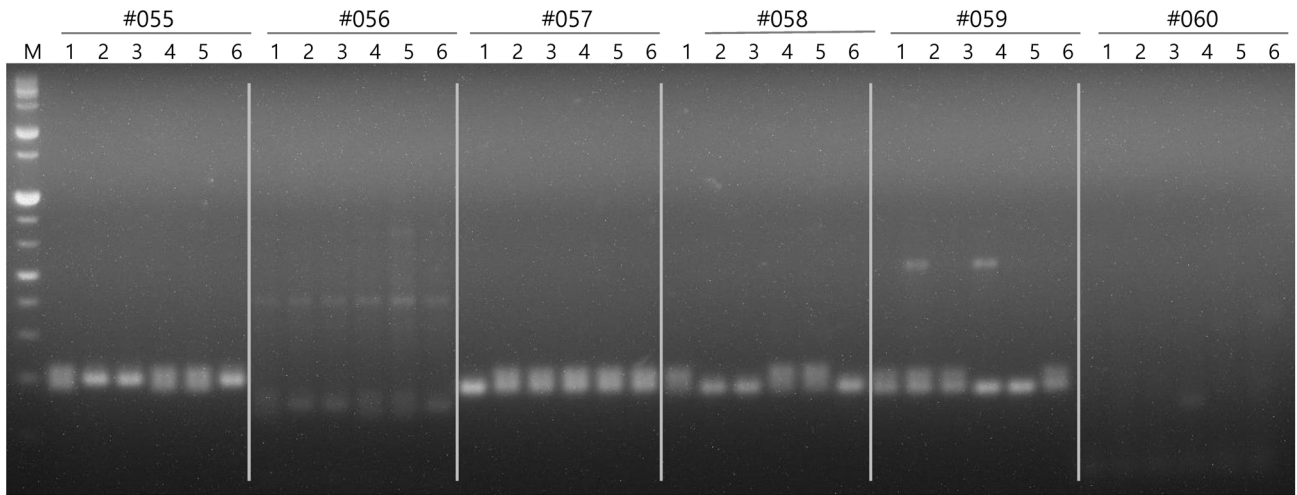
M. 1kb ladder DNA; 1. 'Chiyomaru'; 2. 'Mihong'; 3. 'Yumi'; 4. 'Misshong'; 5. 'Sumi'; 6. 'Yumeong'

Supplementary Fig. 1. Continued.

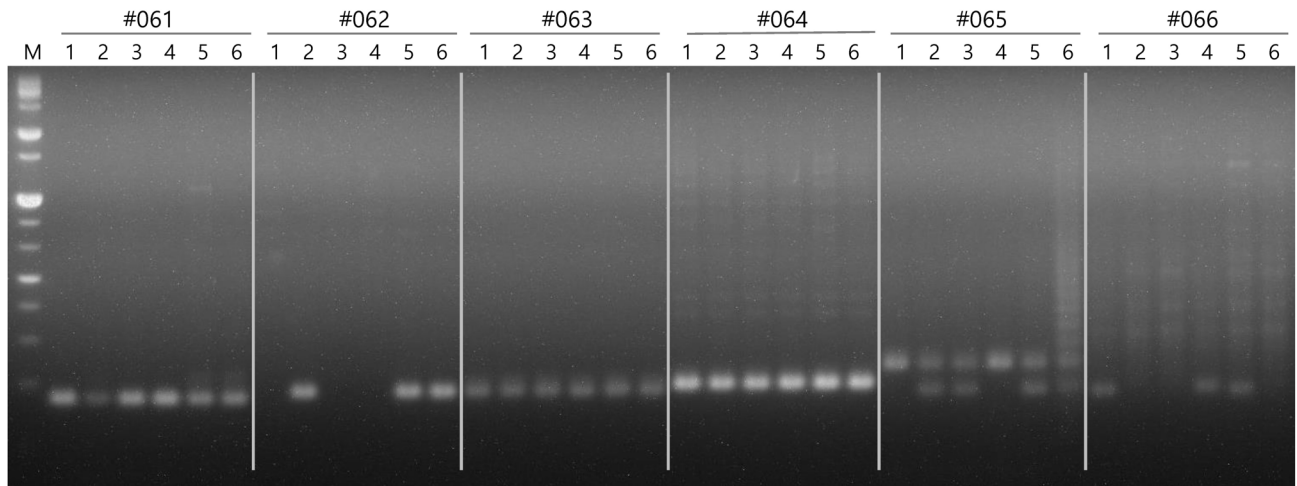


M. 1kb ladder DNA; 1. 'Chiyomaru'; 2. 'Mihong'; 3. 'Yumi'; 4. 'Misshong'; 5. 'Sumi'; 6. 'Yumeong'

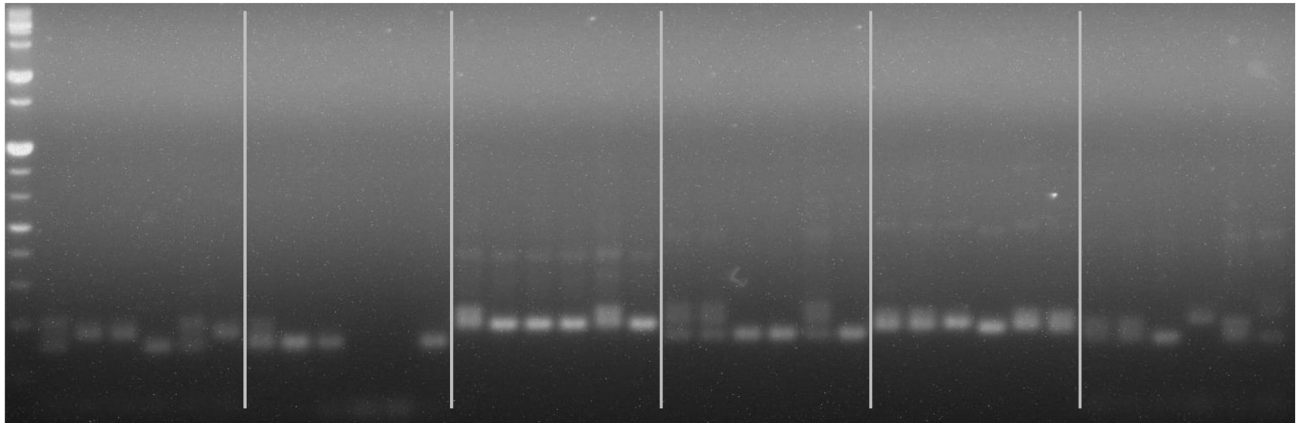
Supplementary Fig. 1. Continued.



M. 1kb ladder DNA; 1. 'Chiyomaru'; 2. 'Mihong'; 3. 'Yumi'; 4. 'Misshong'; 5. 'Sumi'; 6. 'Yumeong'

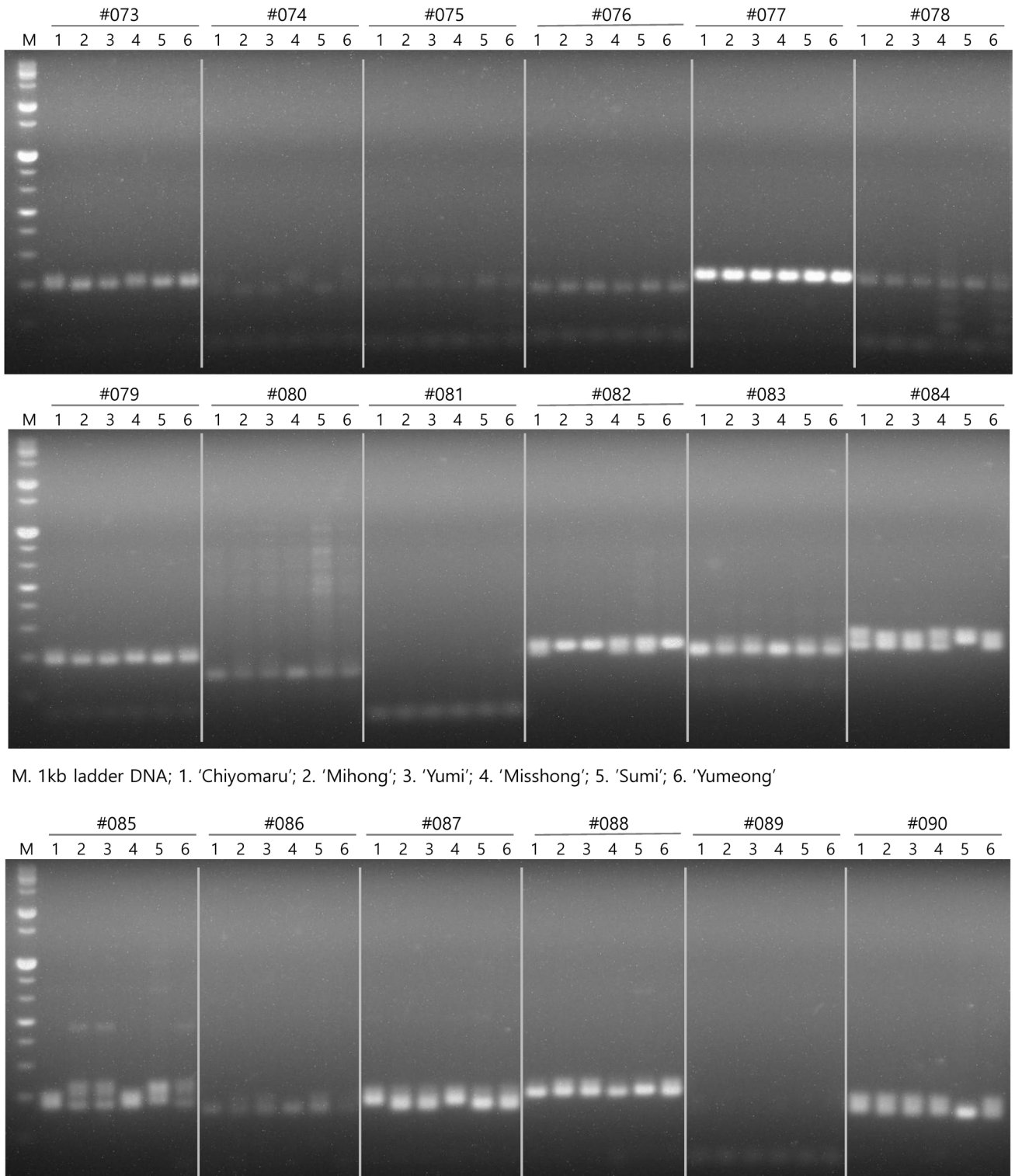


M. 1kb ladder DNA; 1. 'Chiyomaru'; 2. 'Mihong'; 3. 'Yumi'; 4. 'Misshong'; 5. 'Sumi'; 6. 'Yumeong'



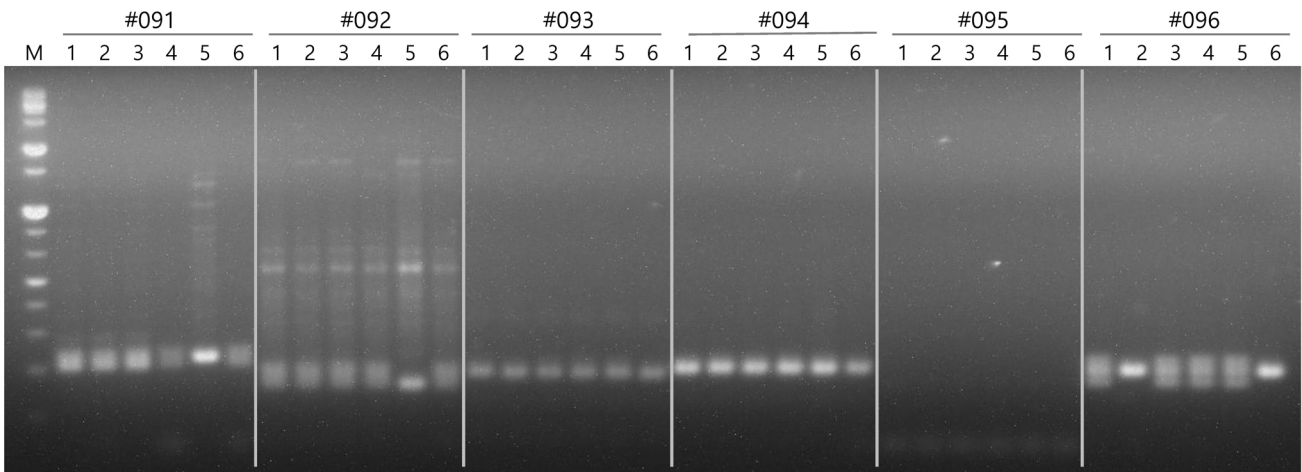
M. 1kb ladder DNA; 1. 'Chiyomaru'; 2. 'Mihong'; 3. 'Yumi'; 4. 'Misshong'; 5. 'Sumi'; 6. 'Yumeong'

Supplementary Fig. 1. Continued.

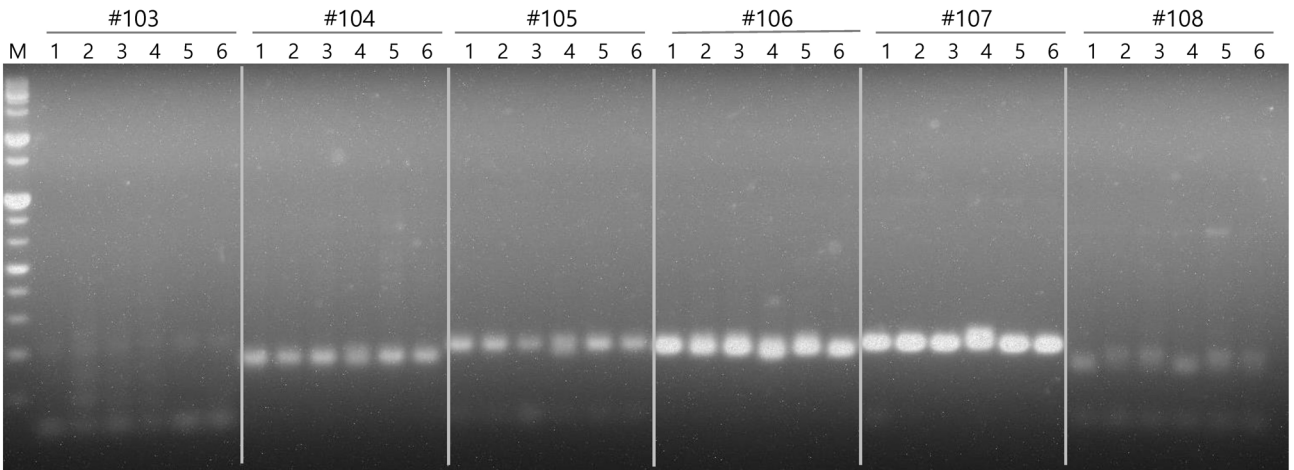
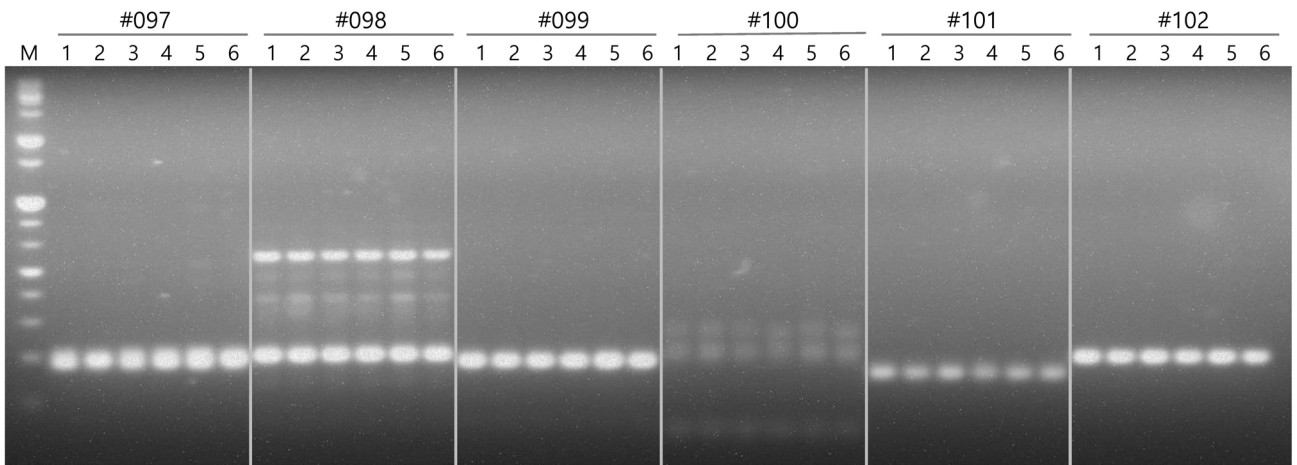


M. 1kb ladder DNA; 1. 'Chiyomaru'; 2. 'Mihong'; 3. 'Yumi'; 4. 'Misshong'; 5. 'Sumi'; 6. 'Yumeong'

Supplementary Fig. 1. Continued.

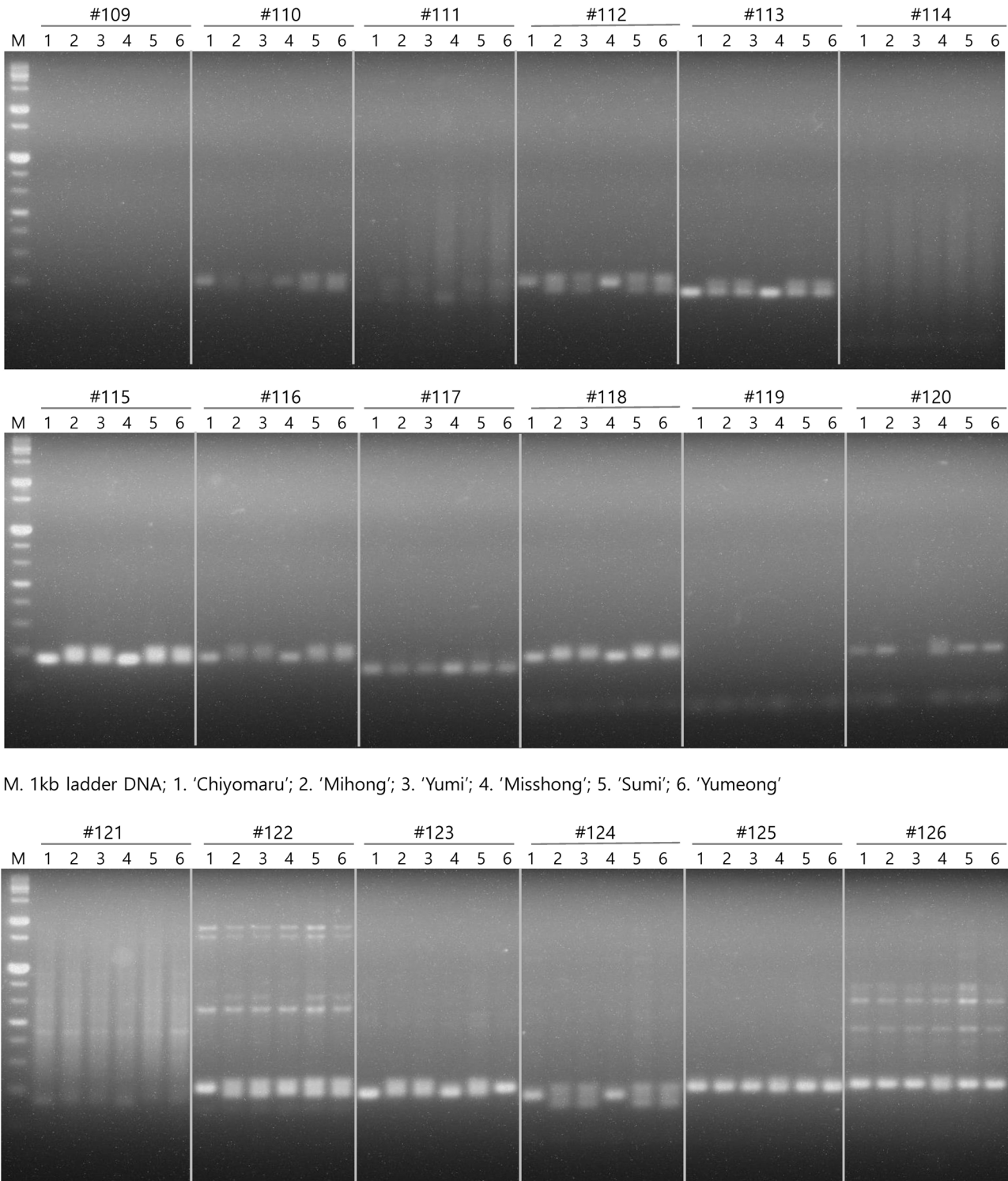


M. 1kb ladder DNA; 1. 'Chiyomaru'; 2. 'Mihong'; 3. 'Yumi'; 4. 'Misshong'; 5. 'Sumi'; 6. 'Yumeong'



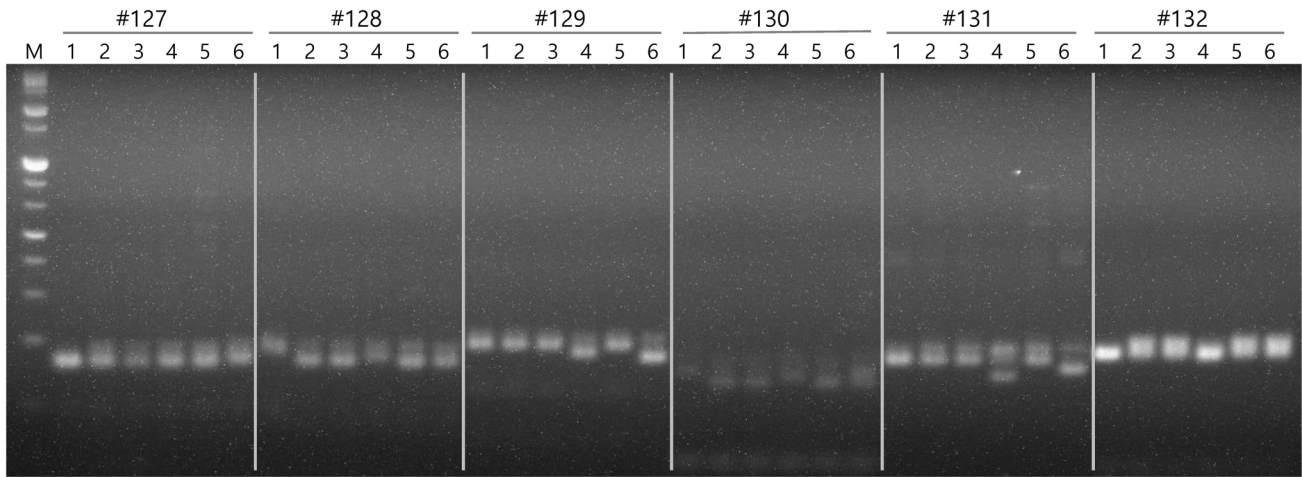
M. 1kb ladder DNA; 1. 'Chiyomaru'; 2. 'Mihong'; 3. 'Yumi'; 4. 'Misshong'; 5. 'Sumi'; 6. 'Yumeong'

Supplementary Fig. 1. Continued.

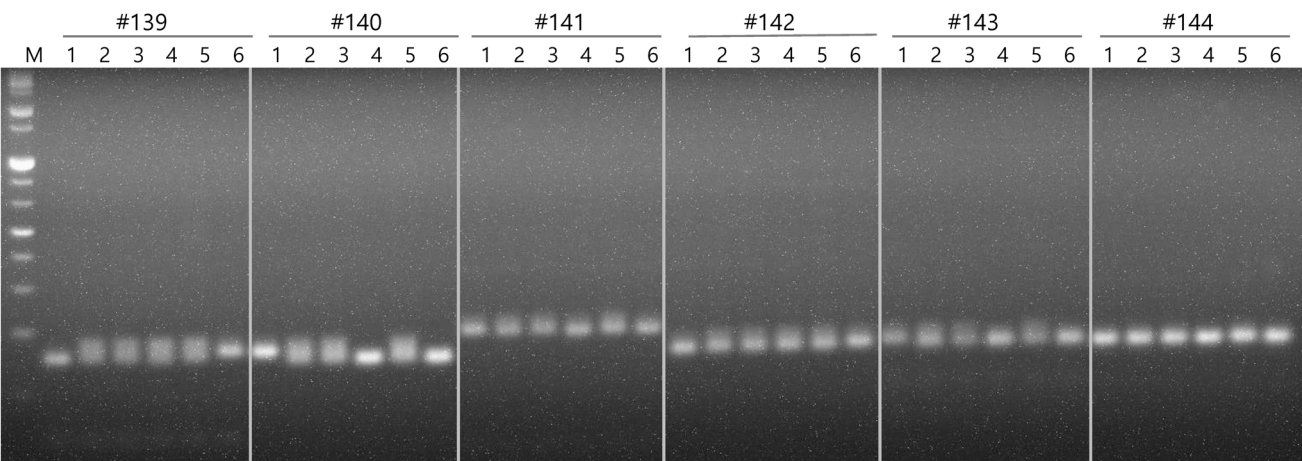
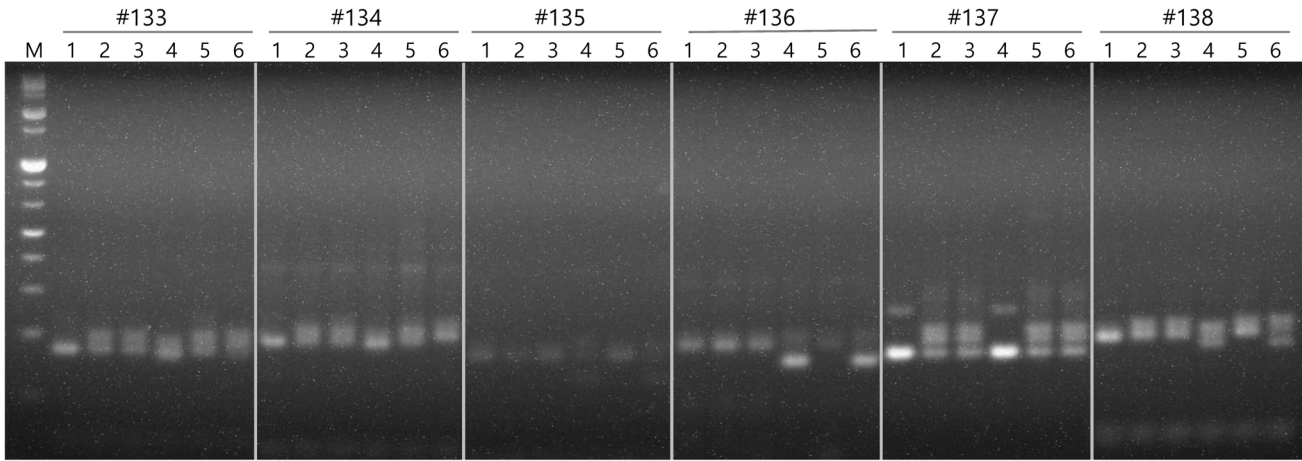


M. 1kb ladder DNA; 1. 'Chiyomaru'; 2. 'Mihong'; 3. 'Yumi'; 4. 'Misshong'; 5. 'Sumi'; 6. 'Yumeong'

Supplementary Fig. 1. Continued.

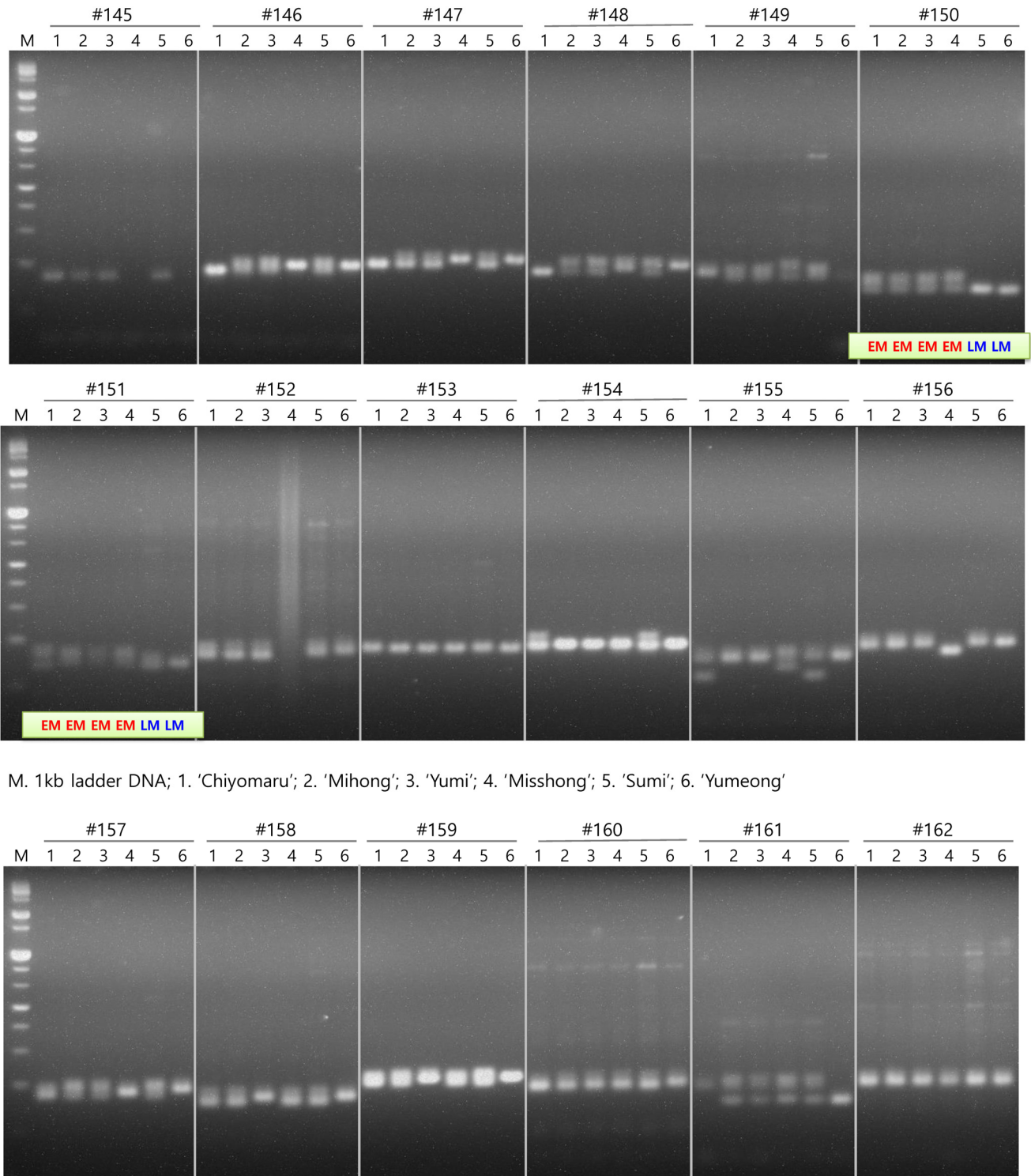


M. 1kb ladder DNA; 1. 'Chiyomaru'; 2. 'Mihong'; 3. 'Yumi'; 4. 'Misshong'; 5. 'Sumi'; 6. 'Yumeong'



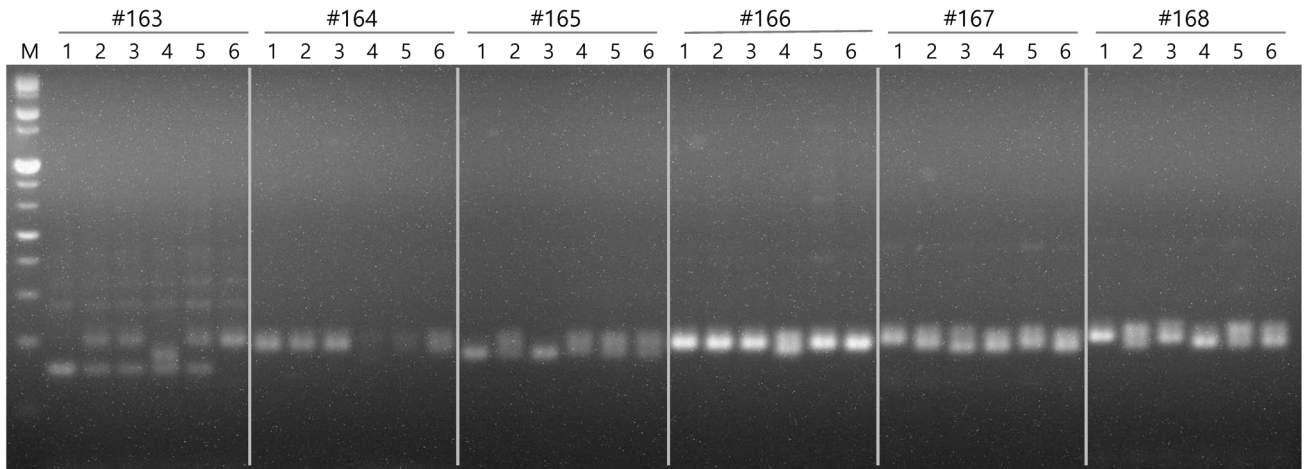
M. 1kb ladder DNA; 1. 'Chiyomaru'; 2. 'Mihong'; 3. 'Yumi'; 4. 'Misshong'; 5. 'Sumi'; 6. 'Yumeong'

Supplementary Fig. 1. Continued.

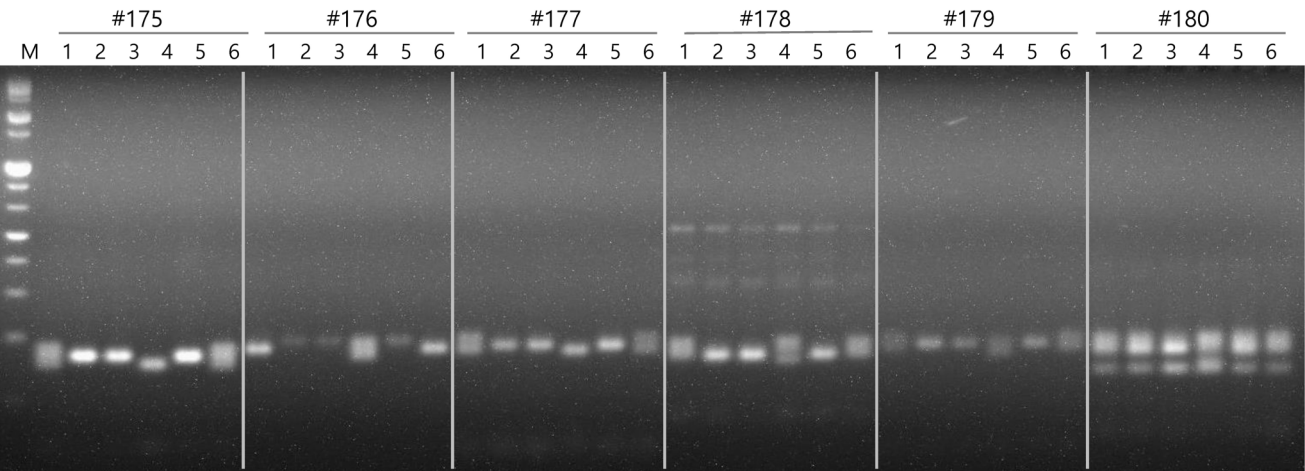
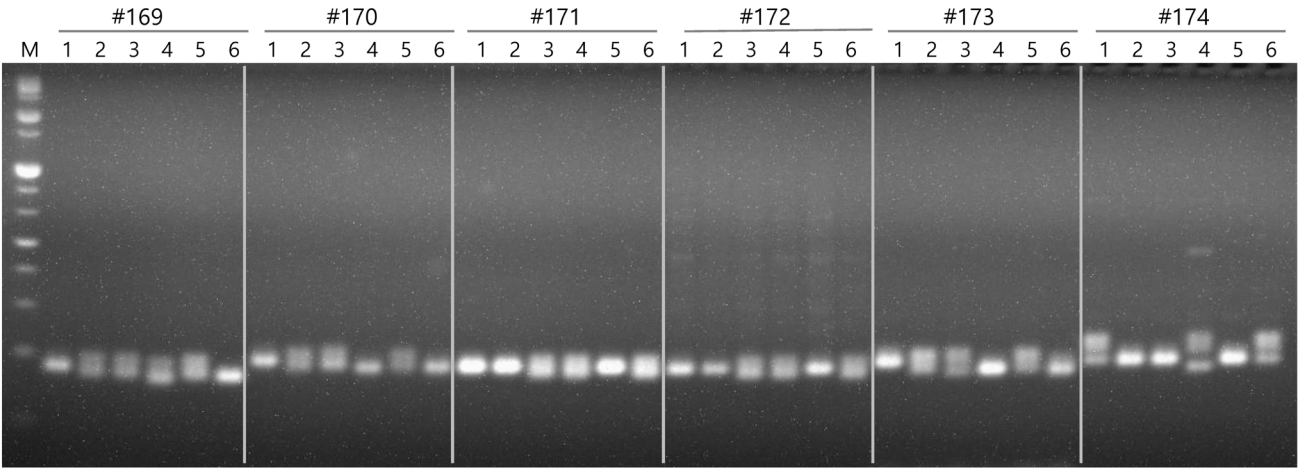


M. 1kb ladder DNA; 1. 'Chiyomaru'; 2. 'Mihong'; 3. 'Yumi'; 4. 'Misshong'; 5. 'Sumi'; 6. 'Yumeong'

Supplementary Fig. 1. Continued.

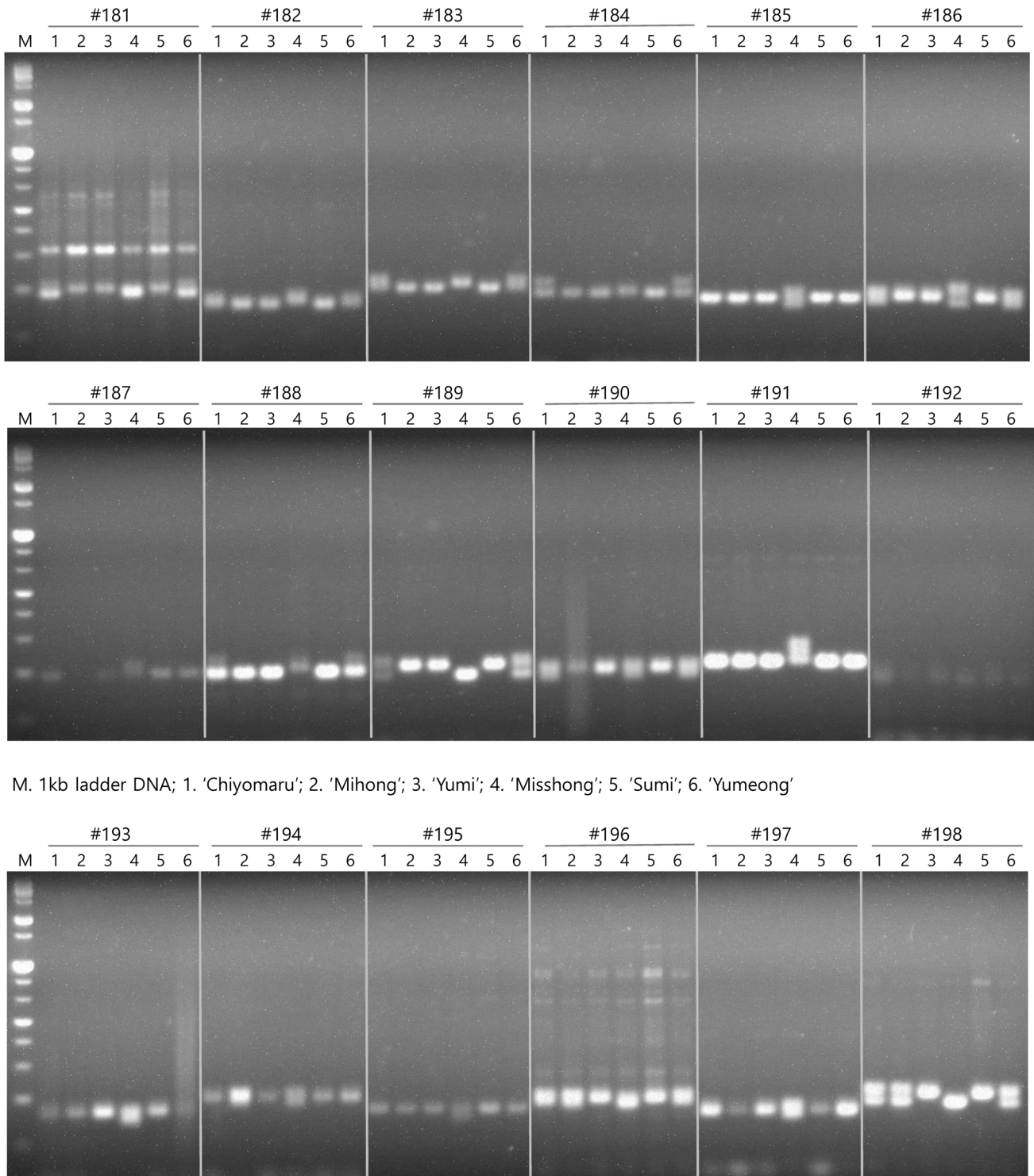


M. 1kb ladder DNA; 1. 'Chiyomaru'; 2. 'Mihong'; 3. 'Yumi'; 4. 'Misshong'; 5. 'Sumi'; 6. 'Yumeong'



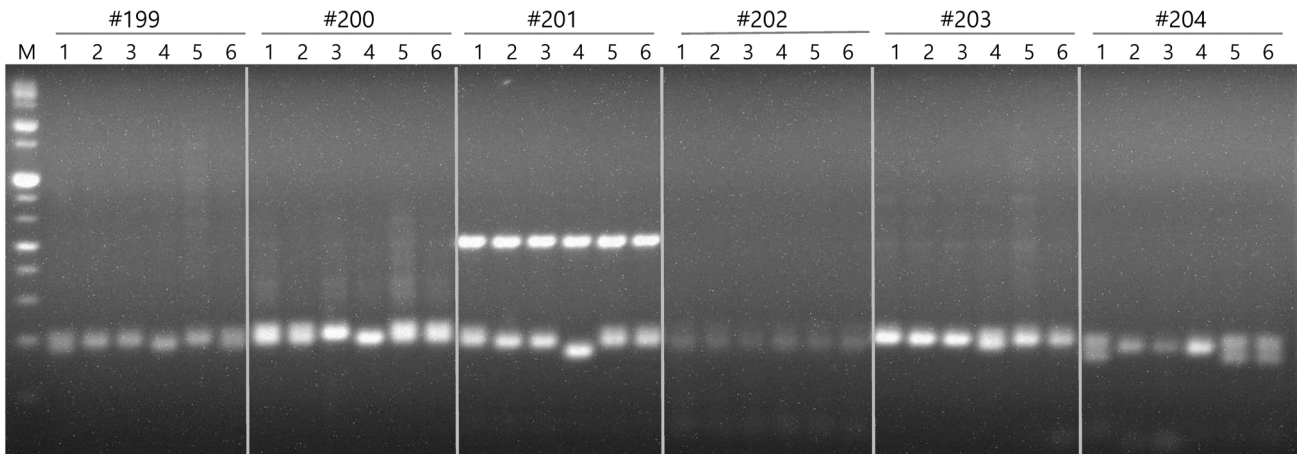
M. 1kb ladder DNA; 1. 'Chiyomaru'; 2. 'Mihong'; 3. 'Yumi'; 4. 'Misshong'; 5. 'Sumi'; 6. 'Yumeong'

Supplementary Fig. 1. Continued.

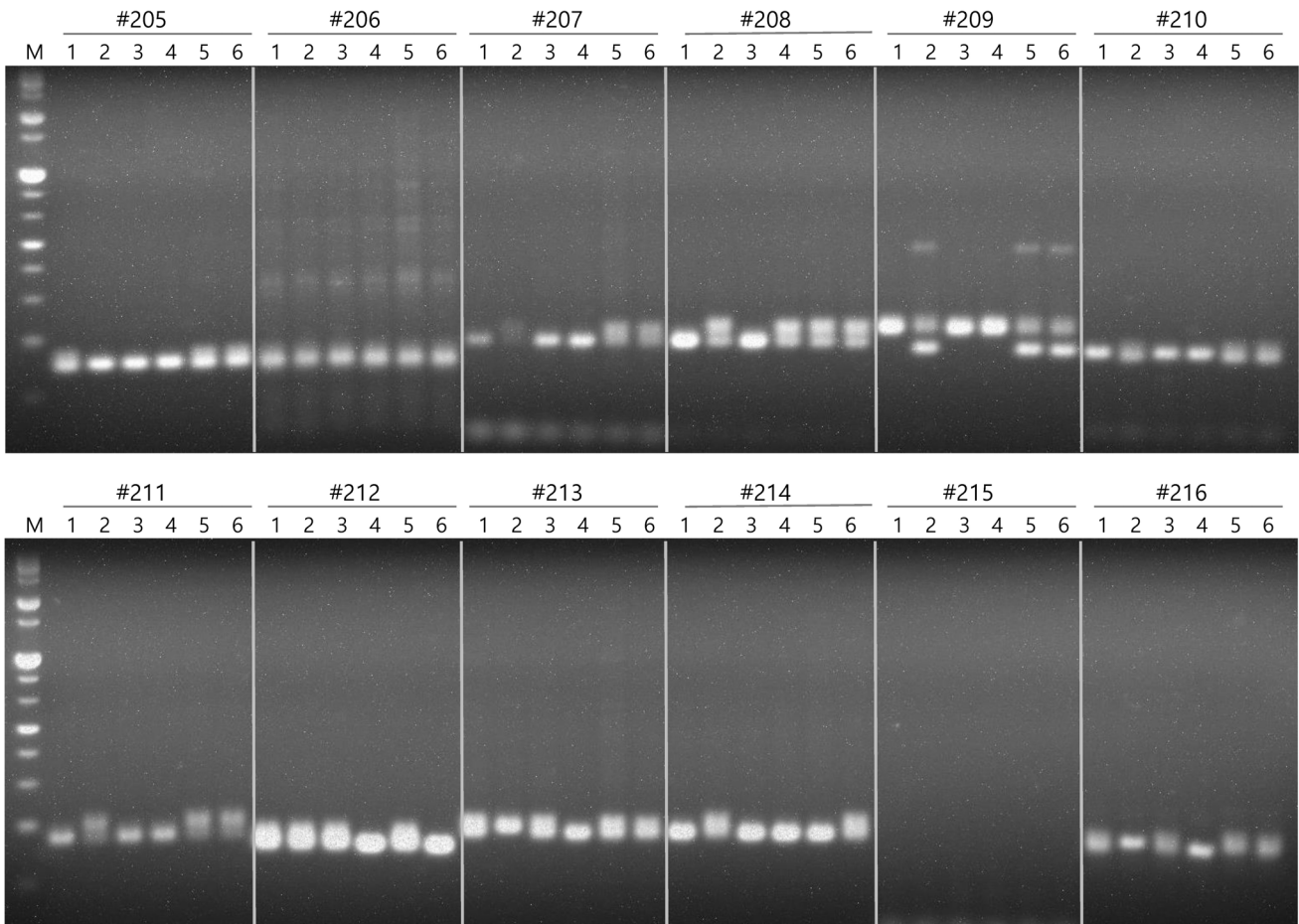


M. 1kb ladder DNA; 1. 'Chiyomaru'; 2. 'Mihong'; 3. 'Yumi'; 4. 'Misshong'; 5. 'Sumi'; 6. 'Yumeong'

Supplementary Fig. 1. Continued.

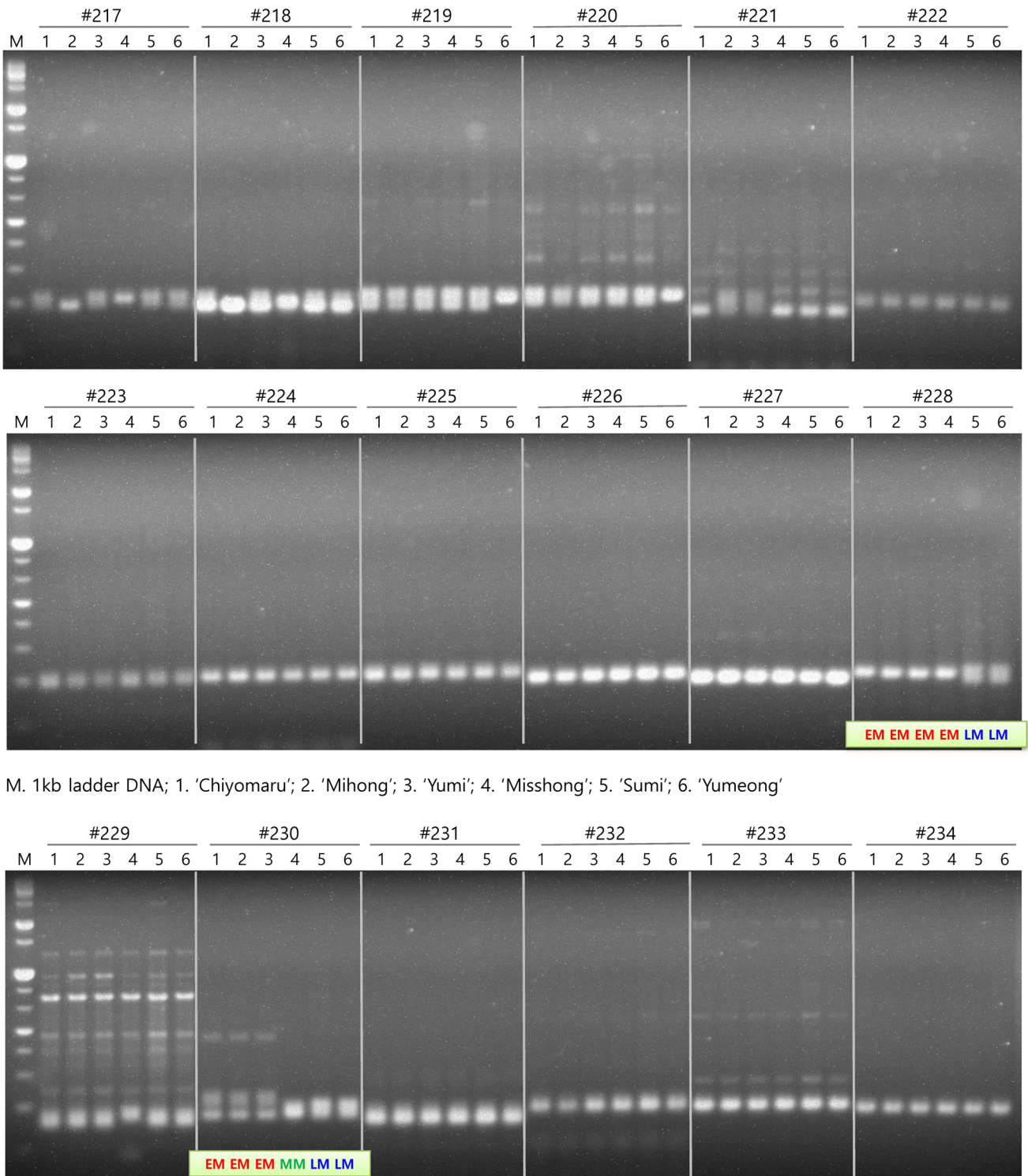


M. 1kb ladder DNA; 1. 'Chiyomaru'; 2. 'Mihong'; 3. 'Yumi'; 4. 'Misshong'; 5. 'Sumi'; 6. 'Yumeong'



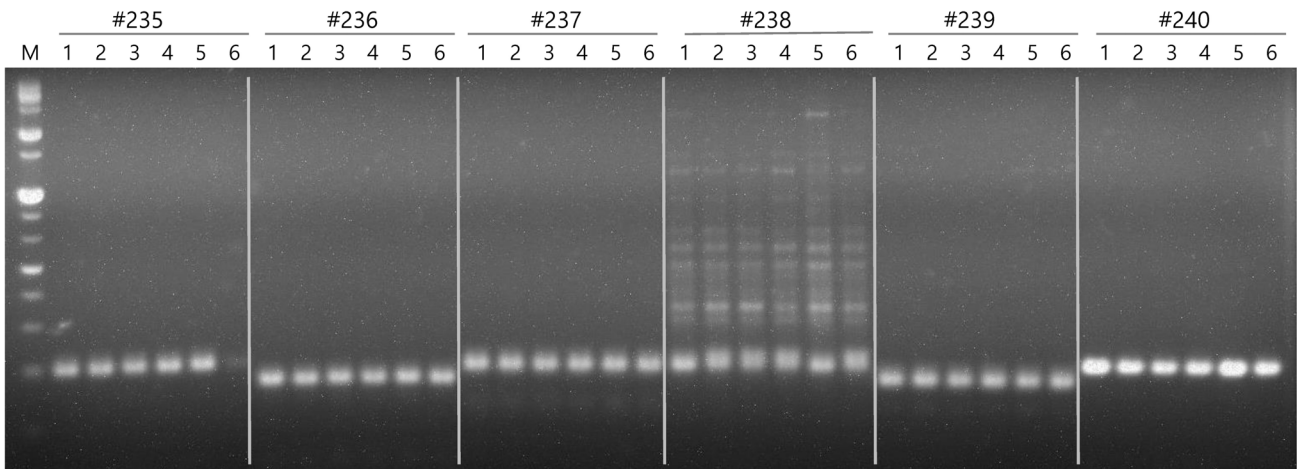
M. 1kb ladder DNA; 1. 'Chiyomaru'; 2. 'Mihong'; 3. 'Yumi'; 4. 'Misshong'; 5. 'Sumi'; 6. 'Yumeong'

Supplementary Fig. 1. Continued.

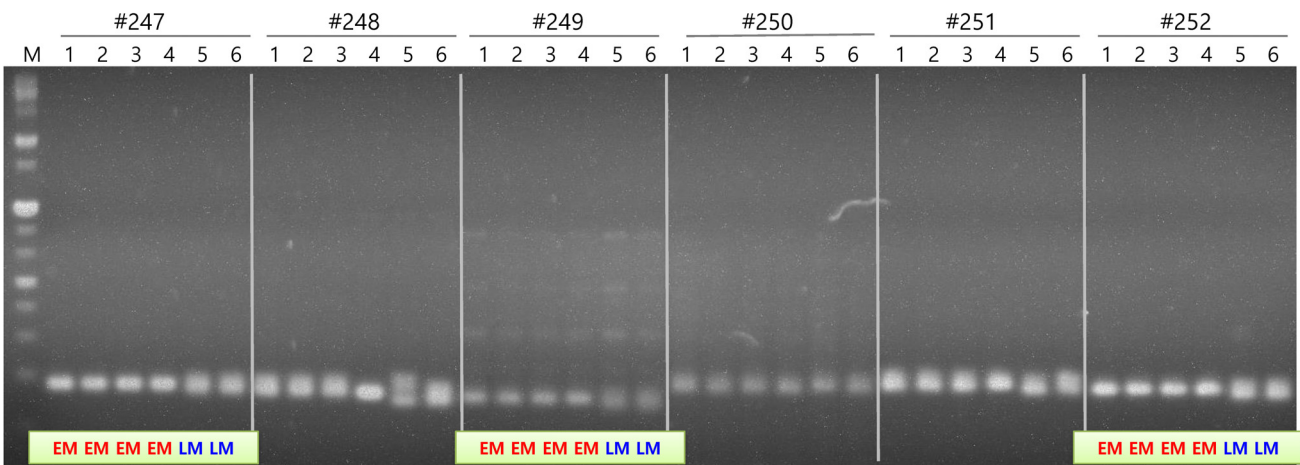
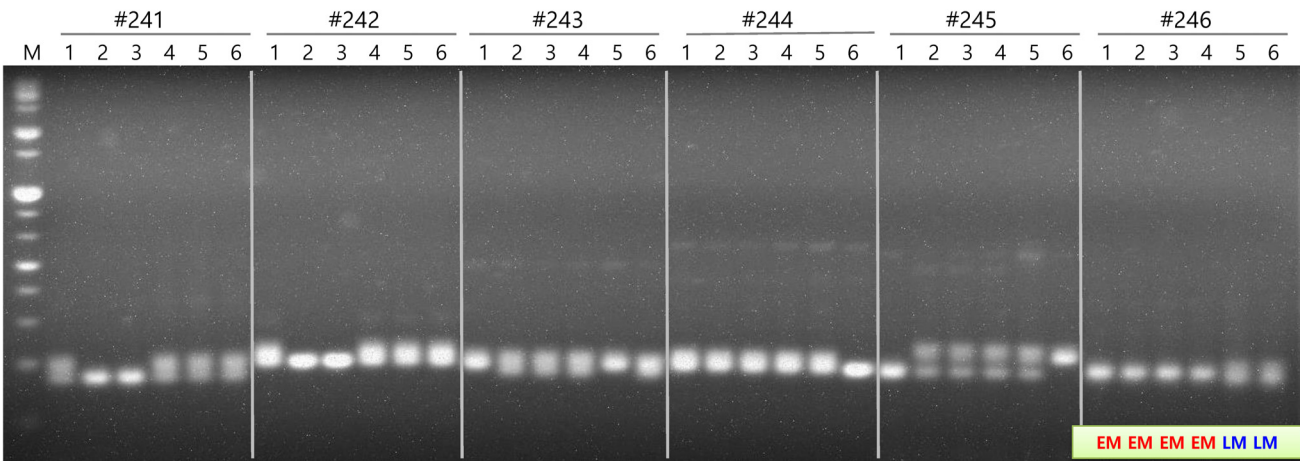


M. 1kb ladder DNA; 1. 'Chiyomaru'; 2. 'Mihong'; 3. 'Yumi'; 4. 'Misshong'; 5. 'Sumi'; 6. 'Yumeong'

Supplementary Fig. 1. Continued.

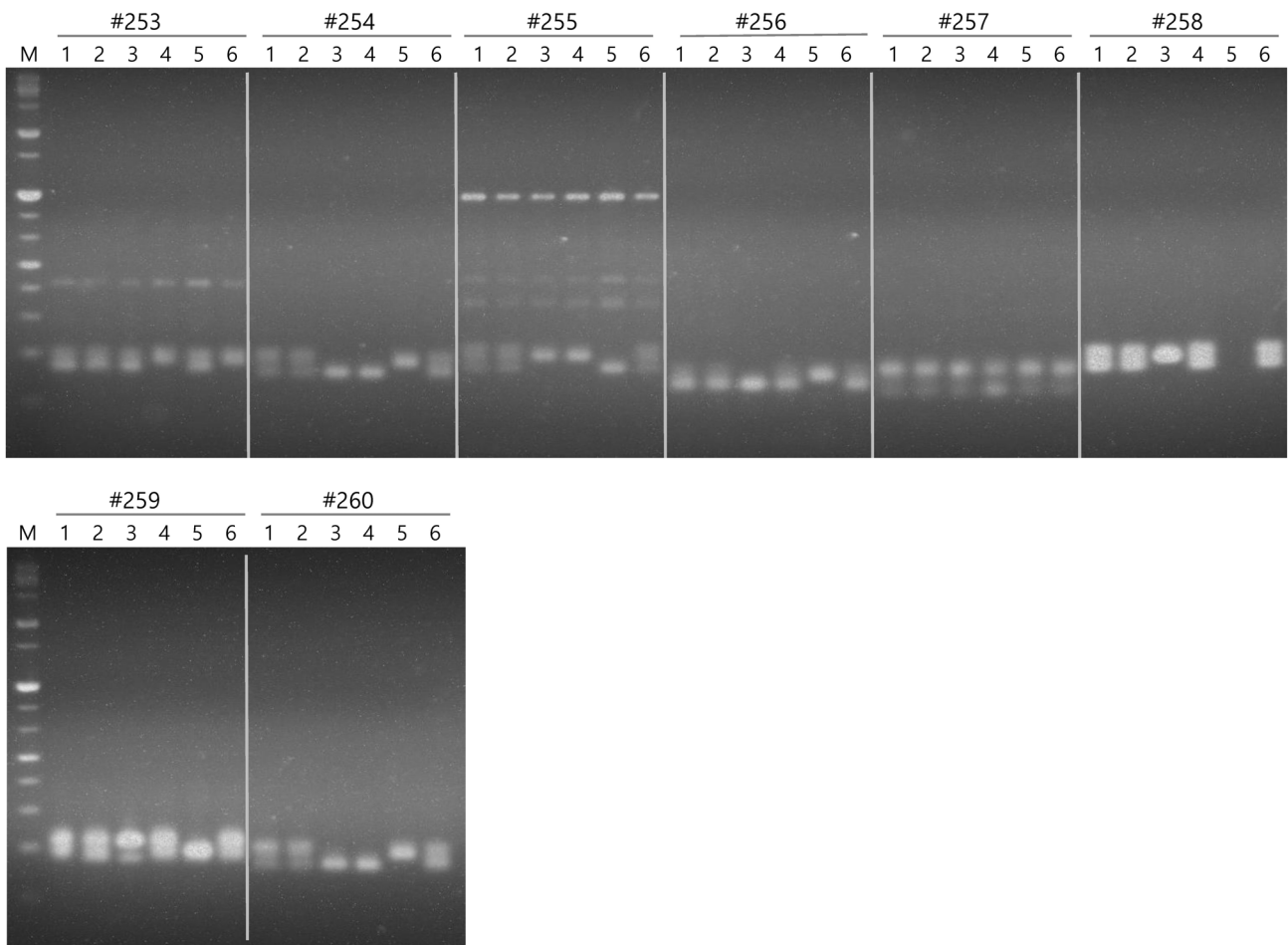


M. 1kb ladder DNA; 1. 'Chiyomaru'; 2. 'Mihong'; 3. 'Yumi'; 4. 'Misshong'; 5. 'Sumi'; 6. 'Yumeong'



M. 1kb ladder DNA; 1. 'Chiyomaru'; 2. 'Mihong'; 3. 'Yumi'; 4. 'Misshong'; 5. 'Sumi'; 6. 'Yumeong'

Supplementary Fig. 1. Continued.



M. 1kb ladder DNA; 1. 'Chiyomaru'; 2. 'Mihong'; 3. 'Yumi'; 4. 'Misshong'; 5. 'Sumi'; 6. 'Yumeong'

Supplementary Fig. 1. Continued.